

IHC*easy* MYSM1 Ready-To-Use IHC Kit

Catalog Number: **KHC1781**

General Information

Sample type:
FFPE tissue

Cited sample type:

Reactivity:
Human, Rat

Cited Reactivity:

Assay type:
Immunohistochemistry

Primary antibody type:
Rabbit Polyclonal

Secondary antibody type:
Polymer-HRP-Goat anti-Rabbit

Kit Component

Component	Size	Concentration
Antigen Retrieval Buffer	100 mL	50×
Washing Buffer	100 mL × 2	20×
Blocking Buffer	5 mL	RTU
Primary Antibody	5 mL	RTU
Secondary Antibody	5 mL	RTU
Chromogen Component A	0.2 mL	RTU
Chromogen Component B	4 mL	RTU
Signal Enhancer	5 mL	RTU
Counter Staining Reagent	5 mL	RTU
Mounting Media	5 mL	RTU
Control Slide	1 slide (Optional)	FFPE
Datasheet	1 Copy	
Manual	1 Copy	

Storage Instructions

All the reagents are stored at 2-8°C. The kit is stable for 6 months from the date of receipt.

Background

MYSM1, also named as KIAA1915, belongs to the peptidase M67A family and MYSM1 subfamily. MYSM1 is a metalloprotease that specifically deubiquitinates monoubiquitinated histone H2A, a specific tag for epigenetic transcriptional repression, thereby acting as a coactivator. Deubiquitination of histone H2A leads to facilitate the phosphorylation and dissociation of histone H1 from the nucleosome. MYSM1 acts as a coactivator by participating in the initiation and elongation steps of androgen receptor (AR)-induced gene activation. It catalyzes the reaction: Ubiquitin C-terminal thioester + H₂O = ubiquitin + a thiol. MYSM1 is a marker of cancer. The primary antibody in this kit is specific to MYSM1.

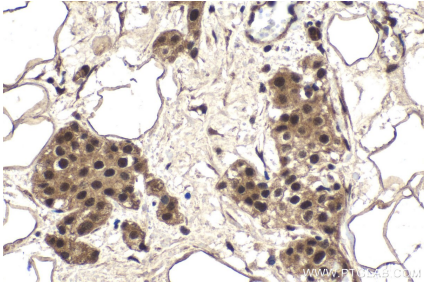
Synonyms

2A DUB, 2ADUB, KIAA1915, MYSM1, MYSM1-Specific, RP4 592A1.1

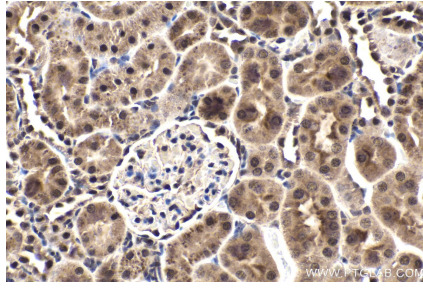
For technical support and original validation data for this product please contact:
T: 1 (888) 4PTGLAB (1-888-478-4522) (toll free in USA), or 1(312) 455-8498 (outside USA)
E: proteintech@ptglab.com
W: ptglab.com

This product is exclusively available under Proteintech Group brand and is not available to purchase from any other manufacturer.

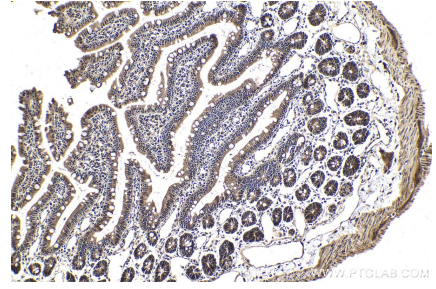
Selected Validation Data



Immunohistochemical analysis of paraffin-embedded human urothelial carcinoma tissue slide using KHC1781 (MYSM1 IHC Kit).



Immunohistochemical analysis of paraffin-embedded rat kidney tissue slide using KHC1781 (MYSM1 IHC Kit).



Immunohistochemical analysis of paraffin-embedded rat small intestine tissue slide using KHC1781 (MYSM1 IHC Kit).