

# IHC*easy* PBRM1 Ready-To-Use IHC Kit

Catalog Number: **KHC1815**

## General Information

**Sample type:**  
FFPE tissue

**Cited sample type:**

**Reactivity:**  
Human, Mouse

**Cited Reactivity:**

**Assay type:**  
Immunohistochemistry

**Primary antibody type:**  
Rabbit Polyclonal

**Secondary antibody type:**  
Polymer-HRP-Goat anti-Rabbit

## Kit Component

Component	Size	Concentration
Antigen Retrieval Buffer	100 mL	50×
Washing Buffer	100 mL ×2	20×
Blocking Buffer	5 mL	RTU
Primary Antibody	5 mL	RTU
Secondary Antibody	5 mL	RTU
Chromogen Component A	0.2 mL	RTU
Chromogen Component B	4 mL	RTU
Signal Enhancer	5 mL	RTU
Counter Staining Reagent	5 mL	RTU
Mounting Media	5 mL	RTU
Control Slide	1 slide (Optional)	FFPE
Datasheet	1 Copy	
Manual	1 Copy	

## Storage Instructions

All the reagents are stored at 2-8°C. The kit is stable for 6 months from the date of receipt.

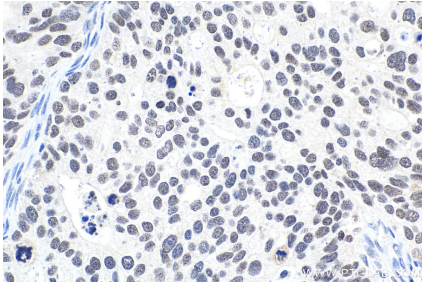
## Background

PBRM1, also named hPB1 BAF180 and Polybromo-1D, acts as a negative regulator of cell proliferation. PBRM1 is the second major mutated clear cell RCC cancer gene after VHL. PBRM1 loss is associated with low grade features.

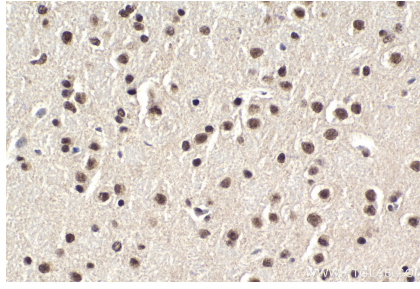
## Synonyms

BAF180, BRG1 associated factor 180, hPB1, PB1, PBRM1, polybromo 1, Polybromo 1D, Protein polybromo 1

## Selected Validation Data



Immunohistochemical analysis of paraffin-embedded human ovary tumor tissue slide using KHC1815 (PBRM1 IHC Kit).



Immunohistochemical analysis of paraffin-embedded mouse brain tissue slide using KHC1815 (PBRM1 IHC Kit).