

# IHC*easy* ZFPM1 Ready-To-Use IHC Kit

Catalog Number: **KHC1819**

## General Information

**Sample type:**  
FFPE tissue

**Cited sample type:**

**Reactivity:**  
Human, Mouse, Rat

**Cited Reactivity:**

**Assay type:**  
Immunohistochemistry

**Primary antibody type:**  
Rabbit Polyclonal

**Secondary antibody type:**  
Polymer-HRP-Goat anti-Rabbit

## Kit Component

Component	Size	Concentration
Antigen Retrieval Buffer	100 mL	50×
Washing Buffer	100 mL ×2	20×
Blocking Buffer	5 mL	RTU
Primary Antibody	5 mL	RTU
Secondary Antibody	5 mL	RTU
Chromogen Component A	0.2 mL	RTU
Chromogen Component B	4 mL	RTU
Signal Enhancer	5 mL	RTU
Counter Staining Reagent	5 mL	RTU
Mounting Media	5 mL	RTU
Control Slide	1 slide (Optional)	FFPE
Datasheet	1 Copy	
Manual	1 Copy	

## Storage Instructions

All the reagents are stored at 2-8°C. The kit is stable for 6 months from the date of receipt.

## Background

ZFPM1 (Zinc Finger Protein, FOG Family Member 1, previous known as FOG1) is a protein with nine zinc finger domains, the C2HC type zinc fingers on ZFPM1 protein are responsible for mediating the interaction with the N-finger of GATA factors. ZFPM1 also contains two domains that are known to recruit transcriptional regulatory complexes. The one located at the extreme N-terminus is essential to recruit the nucleosome remodeling and histone deacetylase (NuRD) complex, another one between zinc fingers 6 and 7 could bind to CtBP co-repressor.

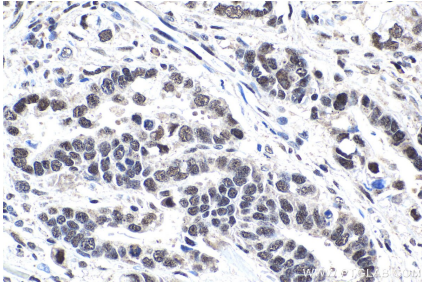
## Synonyms

FOG, FOG 1, FOG1, Friend of GATA 1, Friend of GATA protein 1, ZFPM1, Zinc finger protein ZFPM1, ZNF408, ZNF89A

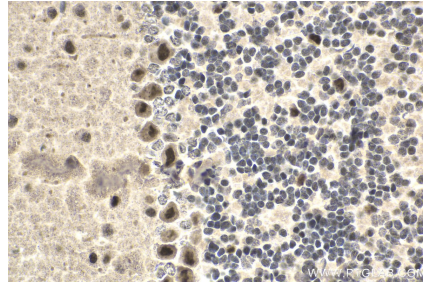
For technical support and original validation data for this product please contact:  
T: 1 (888) 4PTGLAB (1-888-478-4522) (toll free in USA), or 1(312) 455-8498 (outside USA)  
E: [proteintech@ptglab.com](mailto:proteintech@ptglab.com)  
W: [ptglab.com](http://ptglab.com)

This product is exclusively available under Proteintech Group brand and is not available to purchase from any other manufacturer.

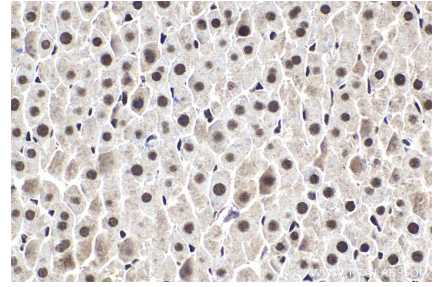
## Selected Validation Data



Immunohistochemical analysis of paraffin-embedded human stomach cancer tissue slide using KHC1819 (ZFPM1 IHC Kit).



Immunohistochemical analysis of paraffin-embedded mouse cerebellum tissue slide using KHC1819 (ZFPM1 IHC Kit).



Immunohistochemical analysis of paraffin-embedded rat liver tissue slide using KHC1819 (ZFPM1 IHC Kit).