

IHC*easy* RNF10 Ready-To-Use IHC Kit

Catalog Number: **KHC1831**

General Information

Sample type:
FFPE tissue

Cited sample type:

Reactivity:
Human, Mouse

Cited Reactivity:

Assay type:
Immunohistochemistry

Primary antibody type:
Rabbit Polyclonal

Secondary antibody type:
Polymer-HRP-Goat anti-Rabbit

Kit Component

Component	Size	Concentration
Antigen Retrieval Buffer	100 mL	50×
Washing Buffer	100 mL ×2	20×
Blocking Buffer	5 mL	RTU
Primary Antibody	5 mL	RTU
Secondary Antibody	5 mL	RTU
Chromogen Component A	0.2 mL	RTU
Chromogen Component B	4 mL	RTU
Signal Enhancer	5 mL	RTU
Counter Staining Reagent	5 mL	RTU
Mounting Media	5 mL	RTU
Control Slide	1 slide (Optional)	FFPE
Datasheet	1 Copy	
Manual	1 Copy	

Storage Instructions

All the reagents are stored at 2-8°C. The kit is stable for 6 months from the date of receipt.

Background

RING finger (C3HC4-type zinc finger) is a variant zinc finger motif present in a new family of proteins including transcription regulators. RNF10 (RING finger protein 10), contains a ring finger motif which is known to be involved in protein-protein interactions. RNF10 regulates myelin-associated glycoprotein (MAG) expression and is required for myelin formation, therefore, participates in the peripheral nerve development and Schwann cell differentiation. RNF10 is also involved in activation of p21WAF1 promoter via its activity as transcriptional factor.

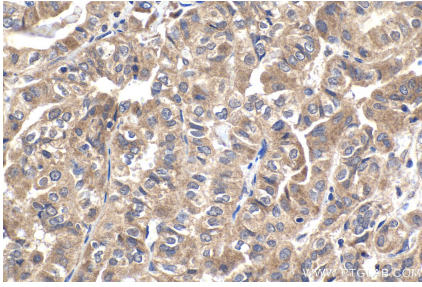
Synonyms

KIAA0262, RIE2, ring finger protein 10, RNF10

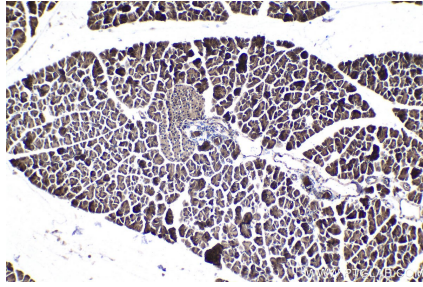
For technical support and original validation data for this product please contact:
T: 1 (888) 4PTGLAB (1-888-478-4522) (toll free in USA), or 1(312) 455-8498 (outside USA)
E: proteintech@ptglab.com
W: ptglab.com

This product is exclusively available under Proteintech Group brand and is not available to purchase from any other manufacturer.

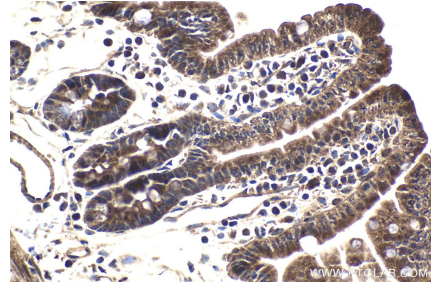
Selected Validation Data



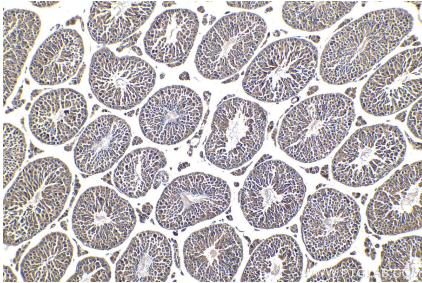
Immunohistochemical analysis of paraffin-embedded human thyroid cancer tissue slide using KHC1831 (RNF10 IHC Kit).



Immunohistochemical analysis of paraffin-embedded mouse pancreas tissue slide using KHC1831 (RNF10 IHC Kit).



Immunohistochemical analysis of paraffin-embedded mouse small intestine tissue slide using KHC1831 (RNF10 IHC Kit).



Immunohistochemical analysis of paraffin-embedded mouse testis tissue slide using KHC1831 (RNF10 IHC Kit).