

IHC*easy* TWIST2 Ready-To-Use IHC Kit

Catalog Number: **KHC1844**

General Information

Sample type:
FFPE tissue

Cited sample type:

Reactivity:
Human, Mouse, Rat

Cited Reactivity:

Assay type:
Immunohistochemistry

Primary antibody type:
Mouse Monoclonal

Secondary antibody type:
Polymer-HRP-Goat anti-Mouse

Kit Component

Component	Size	Concentration
Antigen Retrieval Buffer	100 mL	50×
Washing Buffer	100 mL ×2	20×
Blocking Buffer	5 mL	RTU
Primary Antibody	5 mL	RTU
Secondary Antibody	5 mL	RTU
Chromogen Component A	0.2 mL	RTU
Chromogen Component B	4 mL	RTU
Signal Enhancer	5 mL	RTU
Counter Staining Reagent	5 mL	RTU
Mounting Media	5 mL	RTU
Control Slide	1 slide (Optional)	FFPE
Datasheet	1 Copy	
Manual	1 Copy	

Storage Instructions

All the reagents are stored at 2-8°C. The kit is stable for 6 months from the date of receipt.

Background

TWIST2, also named as BHLHA39 and DERMO1, is a basic helix-loop-helix protein which acts as a transcriptional regulator, plays a central role in differentiation of mesodermal during embryogenesis. TWIST2 inhibits the premature or ectopic differentiation of preosteoblast cells during osteogenesis, possibly by changing the internal signal transduction response of osteoblasts to external growth factors. It is also implicated in tumorigenesis, invasion and metastasis. TWIST2 forms both homodimers (45KD) and heterodimers with E2A E proteins, and dimer partner selection is a critical mediator of TWIST function.

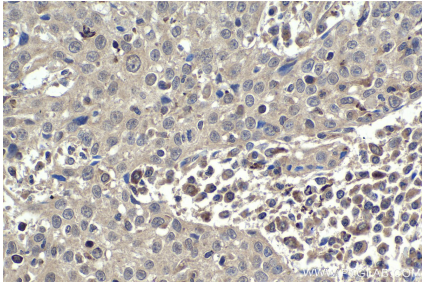
Synonyms

bHLHa39, Dermis expressed protein 1, Dermo 1, DERMO1, twist homolog 2 (Drosophila), Twist related protein 2, TWIST2

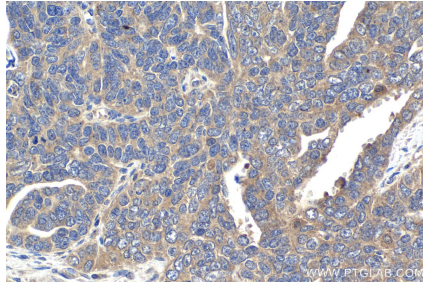
For technical support and original validation data for this product please contact:
T: 1 (888) 4PTGLAB (1-888-478-4522) (toll free in USA), or 1(312) 455-8498 (outside USA)
E: proteintech@ptglab.com
W: ptglab.com

This product is exclusively available under Proteintech Group brand and is not available to purchase from any other manufacturer.

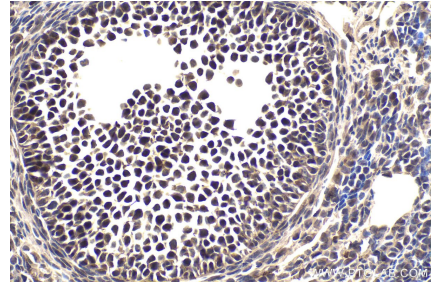
Selected Validation Data



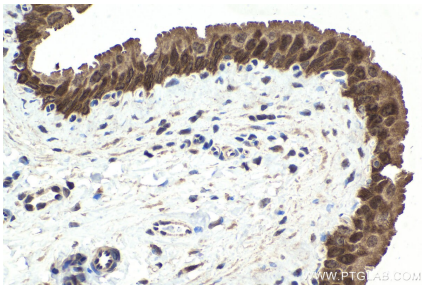
Immunohistochemical analysis of paraffin-embedded human cervical cancer tissue slide using KHC1844 (TWIST2 IHC Kit).



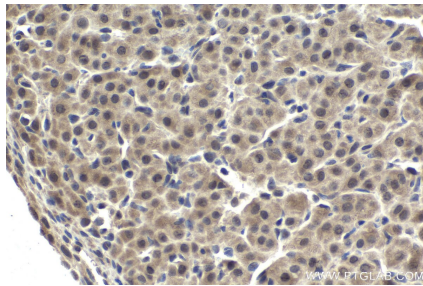
Immunohistochemical analysis of paraffin-embedded human ovary tumor tissue slide using KHC1844 (TWIST2 IHC Kit).



Immunohistochemical analysis of paraffin-embedded mouse ovary tissue slide using KHC1844 (TWIST2 IHC Kit).



Immunohistochemical analysis of paraffin-embedded rat bladder tissue slide using KHC1844 (TWIST2 IHC Kit).



Immunohistochemical analysis of paraffin-embedded rat ovary tissue slide using KHC1844 (TWIST2 IHC Kit).