

IHC*easy* AJUBA Ready-To-Use IHC Kit

Catalog Number: **KHC1873**

General Information

Sample type:
FFPE tissue

Cited sample type:

Reactivity:
Human, Mouse, Rat

Cited Reactivity:

Assay type:
Immunohistochemistry

Primary antibody type:
Rabbit Polyclonal

Secondary antibody type:
Polymer-HRP-Goat anti-Rabbit

Kit Component

Component	Size	Concentration
Antigen Retrieval Buffer	100 mL	50×
Washing Buffer	100 mL ×2	20×
Blocking Buffer	5 mL	RTU
Primary Antibody	5 mL	RTU
Secondary Antibody	5 mL	RTU
Chromogen Component A	0.2 mL	RTU
Chromogen Component B	4 mL	RTU
Signal Enhancer	5 mL	RTU
Counter Staining Reagent	5 mL	RTU
Mounting Media	5 mL	RTU
Control Slide	1 slide (Optional)	FFPE
Datasheet	1 Copy	
Manual	1 Copy	

Storage Instructions

All the reagents are stored at 2-8°C. The kit is stable for 6 months from the date of receipt.

Background

AJUBA belongs to the LIM domain proteins, which are involved in the assembly of the extracellular matrix and, along with associated proteins, regulate target genes that connect the extracellular matrix and the cytoskeleton. AJUBA consists of three LIM domains at the C-terminal and is located in the cytoplasm where it interacts with a variety of other proteins. AJUBA contributes to the formation or strengthening of cell-cell adhesion and regulates cell growth and differentiation decisions. AJUBA participates in the assembly of the extracellular matrix. AJUBA also plays an important role in some diseases.

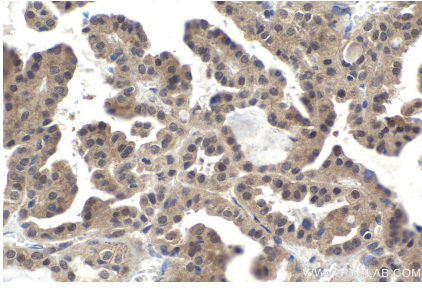
Synonyms

Ajuba, JUB, Protein ajuba

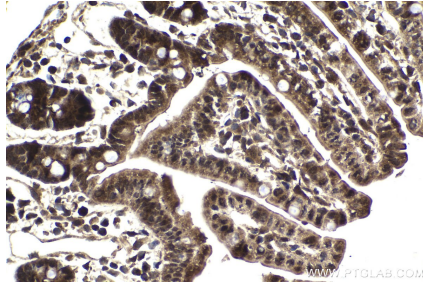
For technical support and original validation data for this product please contact:
T: 1 (888) 4PTGLAB (1-888-478-4522) (toll free in USA), or 1(312) 455-8498 (outside USA)
E: proteintech@ptglab.com
W: ptglab.com

This product is exclusively available under Proteintech Group brand and is not available to purchase from any other manufacturer.

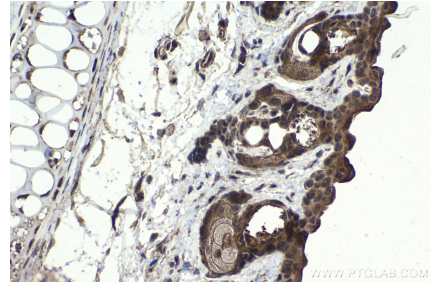
Selected Validation Data



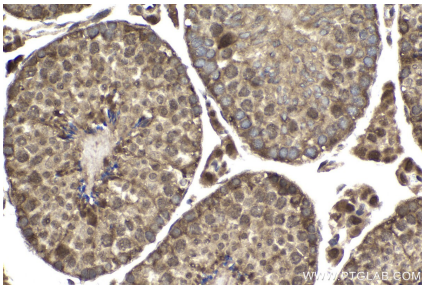
Immunohistochemical analysis of paraffin-embedded human thyroid cancer tissue slide using KHC1873 (AJUBA IHC Kit).



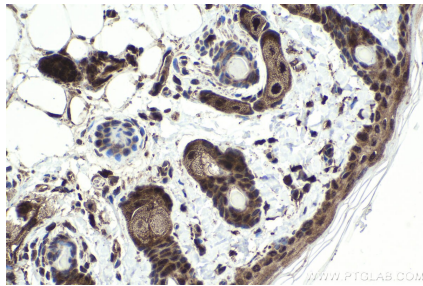
Immunohistochemical analysis of paraffin-embedded mouse small intestine tissue slide using KHC1873 (AJUBA IHC Kit).



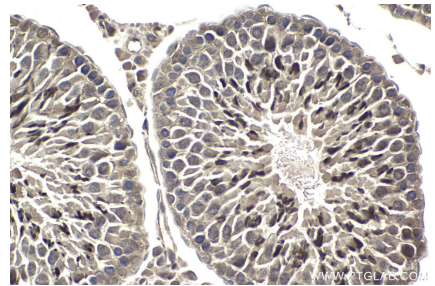
Immunohistochemical analysis of paraffin-embedded mouse skin tissue slide using KHC1873 (AJUBA IHC Kit).



Immunohistochemical analysis of paraffin-embedded mouse testis tissue slide using KHC1873 (AJUBA IHC Kit).



Immunohistochemical analysis of paraffin-embedded rat skin tissue slide using KHC1873 (AJUBA IHC Kit).



Immunohistochemical analysis of paraffin-embedded rat testis tissue slide using KHC1873 (AJUBA IHC Kit).