

IHC*easy* NACC1 Ready-To-Use IHC Kit

Catalog Number: **KHC1882**

General Information

Sample type:
FFPE tissue

Cited sample type:

Reactivity:
Human, Mouse, Rat

Cited Reactivity:

Assay type:
Immunohistochemistry

Primary antibody type:
Rabbit Polyclonal

Secondary antibody type:
Polymer-HRP-Goat anti-Rabbit

Kit Component

Component	Size	Concentration
Antigen Retrieval Buffer	100 mL	50×
Washing Buffer	100 mL ×2	20×
Blocking Buffer	5 mL	RTU
Primary Antibody	5 mL	RTU
Secondary Antibody	5 mL	RTU
Chromogen Component A	0.2 mL	RTU
Chromogen Component B	4 mL	RTU
Signal Enhancer	5 mL	RTU
Counter Staining Reagent	5 mL	RTU
Mounting Media	5 mL	RTU
Control Slide	1 slide (Optional)	FFPE
Datasheet	1 Copy	
Manual	1 Copy	

Storage Instructions

All the reagents are stored at 2-8°C. The kit is stable for 6 months from the date of receipt.

Background

NACC1, also named as BTBD14B and NAC1, belongs to the BTB/POZ family. NACC1 is a transcriptional repressor, which is amplified and overexpressed in various human cancers and plays critical roles in tumor development, progression, and drug resistance. While NAC1 has been shown to repress the transcription of two tumor suppressors, Gadd45-g and Gadd45-g- interacting protein 1, scientists have found that NACC1 also plays an important role in nontranscriptional function, for example, it can act as a bridge for MAVS and TBK1 in RLR-mediated signaling.

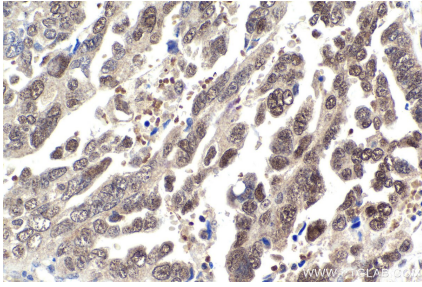
Synonyms

BEND8, BTBD14B, NAC 1, NAC1, NACC1

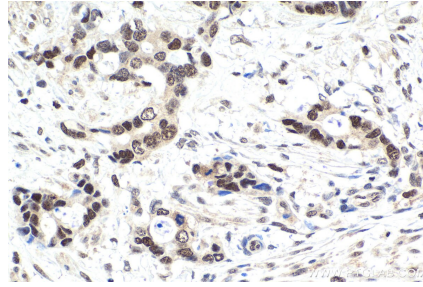
For technical support and original validation data for this product please contact:
T: 1 (888) 4PTGLAB (1-888-478-4522) (toll free in USA), or 1(312) 455-8498 (outside USA)
E: proteintech@ptglab.com
W: ptglab.com

This product is exclusively available under Proteintech Group brand and is not available to purchase from any other manufacturer.

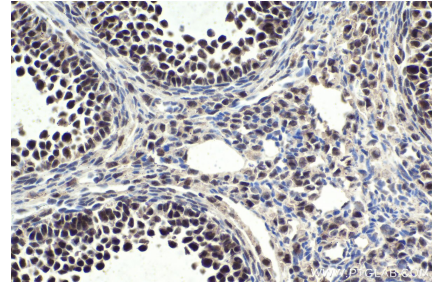
Selected Validation Data



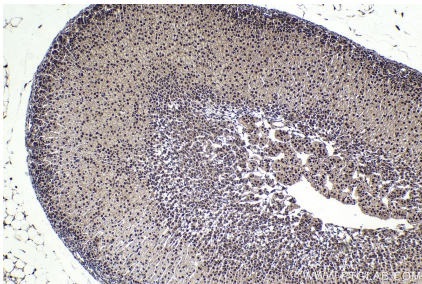
Immunohistochemical analysis of paraffin-embedded human ovary tumor tissue slide using KHC1882 (NACC1 IHC Kit).



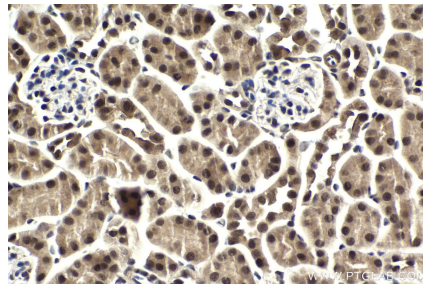
Immunohistochemical analysis of paraffin-embedded human urothelial carcinoma tissue slide using KHC1882 (NACC1 IHC Kit).



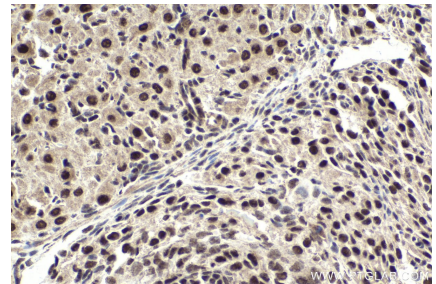
Immunohistochemical analysis of paraffin-embedded mouse ovary tissue slide using KHC1882 (NACC1 IHC Kit).



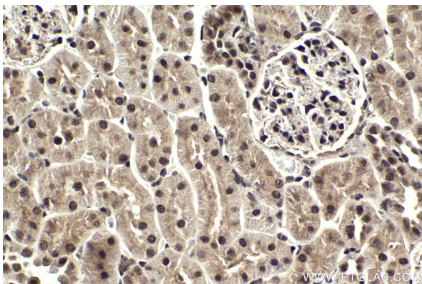
Immunohistochemical analysis of paraffin-embedded mouse adrenal gland tissue slide using KHC1882 (NACC1 IHC Kit).



Immunohistochemical analysis of paraffin-embedded mouse kidney tissue slide using KHC1882 (NACC1 IHC Kit).



Immunohistochemical analysis of paraffin-embedded rat ovary tissue slide using KHC1882 (NACC1 IHC Kit).



Immunohistochemical analysis of paraffin-embedded rat kidney tissue slide using KHC1882 (NACC1 IHC Kit).