

# IHC*easy* SOX7 Ready-To-Use IHC Kit

Catalog Number: **KHC1903**

## General Information

**Sample type:**  
FFPE tissue

**Cited sample type:**

**Reactivity:**  
Human, Mouse

**Cited Reactivity:**

**Assay type:**  
Immunohistochemistry

**Primary antibody type:**  
Rabbit Polyclonal

**Secondary antibody type:**  
Polymer-HRP-Goat anti-Rabbit

## Kit Component

Component	Size	Concentration
Antigen Retrieval Buffer	100 mL	50×
Washing Buffer	100 mL ×2	20×
Blocking Buffer	5 mL	RTU
Primary Antibody	5 mL	RTU
Secondary Antibody	5 mL	RTU
Chromogen Component A	0.2 mL	RTU
Chromogen Component B	4 mL	RTU
Signal Enhancer	5 mL	RTU
Counter Staining Reagent	5 mL	RTU
Mounting Media	5 mL	RTU
Control Slide	1 slide (Optional)	FFPE
Datasheet	1 Copy	
Manual	1 Copy	

## Storage Instructions

All the reagents are stored at 2-8°C. The kit is stable for 6 months from the date of receipt.

## Background

SOX7, also named as Transcription factor SOX-7, is a 388 amino acid protein, which is widely expressed in adult and fetal tissues and tends to be down-regulated in prostate adenocarcinomas and colorectal tumors due to promoter hypermethylation. SOX7 binds to and activates the CDH5 promoter, hence plays a role in the transcriptional regulation of genes expressed in the hemogenic endothelium and blocks further differentiation into blood precursors. SOX7 may be required for the survival of both hematopoietic and endothelial precursors during specification.

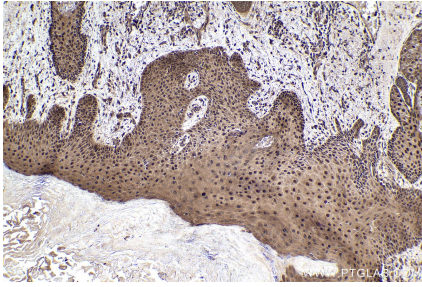
## Synonyms

SOX7, Transcription factor SOX 7

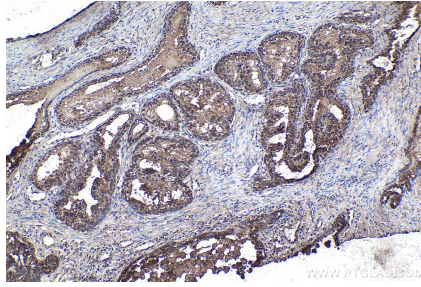
For technical support and original validation data for this product please contact:  
T: 1 (888) 4PTGLAB (1-888-478-4522) (toll free in USA), or 1(312) 455-8498 (outside USA)  
E: [proteintech@ptglab.com](mailto:proteintech@ptglab.com)  
W: [ptglab.com](http://ptglab.com)

This product is exclusively available under Proteintech Group brand and is not available to purchase from any other manufacturer.

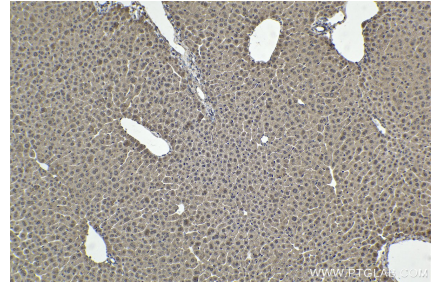
## Selected Validation Data



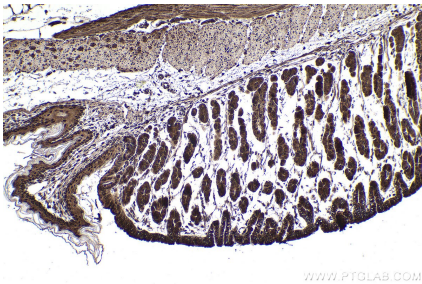
Immunohistochemical analysis of paraffin-embedded human skin cancer tissue slide using KHC1903 (SOX7 IHC Kit).



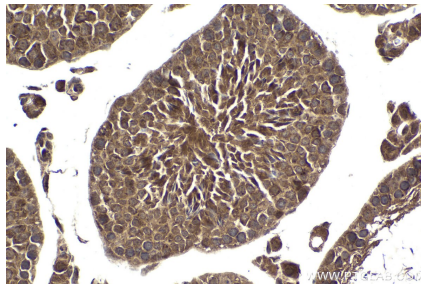
Immunohistochemical analysis of paraffin-embedded human prostate cancer tissue slide using KHC1903 (SOX7 IHC Kit).



Immunohistochemical analysis of paraffin-embedded mouse liver tissue slide using KHC1903 (SOX7 IHC Kit).



Immunohistochemical analysis of paraffin-embedded mouse stomach tissue slide using KHC1903 (SOX7 IHC Kit).



Immunohistochemical analysis of paraffin-embedded mouse testis tissue slide using KHC1903 (SOX7 IHC Kit).