

# IHC*easy* BCL11A Ready-To-Use IHC Kit

Catalog Number: **KHC1923**

## General Information

**Sample type:**  
FFPE tissue

**Cited sample type:**

**Reactivity:**  
Human, Mouse, Rat

**Cited Reactivity:**

**Assay type:**  
Immunohistochemistry

**Primary antibody type:**  
Rabbit Polyclonal

**Secondary antibody type:**  
Polymer-HRP-Goat anti-Rabbit

## Kit Component

Component	Size	Concentration
Antigen Retrieval Buffer	100 mL	50×
Washing Buffer	100 mL ×2	20×
Blocking Buffer	5 mL	RTU
Primary Antibody	5 mL	RTU
Secondary Antibody	5 mL	RTU
Chromogen Component A	0.2 mL	RTU
Chromogen Component B	4 mL	RTU
Signal Enhancer	5 mL	RTU
Counter Staining Reagent	5 mL	RTU
Mounting Media	5 mL	RTU
Control Slide	1 slide (Optional)	FFPE
Datasheet	1 Copy	
Manual	1 Copy	

## Storage Instructions

All the reagents are stored at 2-8°C. The kit is stable for 6 months from the date of receipt.

## Background

B-CELL CLL/LYMPHOMA 11A(BCL11A) is a highly conserved zinc finger gene. It acts as a myeloid and B-cell proto-oncogene, and may play key roles in leukemogenesis and hematopoiesis. It is an essential factor in lymphopoiesis, and required for B-cell formation in fetal liver. May function as a modulator of the transcriptional repression activity of ARP1. It is also involved in lymphoid malignancies through translocation or amplification events. It has recently been shown that BCL11A expression is inversely correlated with  $\gamma$  globin expression.

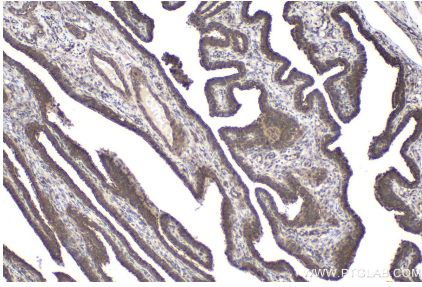
## Synonyms

B cell CLL/lymphoma 11A, B cell lymphoma/leukemia 11A, BCL11A, COUP TF interacting protein 1, CTIP1, EVI 9, EVI9, HBFQTL5, KIAA1809, ZNF856

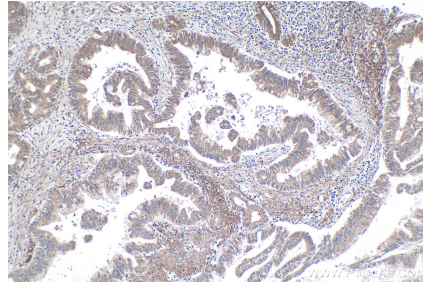
For technical support and original validation data for this product please contact:  
T: 1 (888) 4PTGLAB (1-888-478-4522) (toll free in USA), or 1(312) 455-8498 (outside USA)  
E: [proteintech@ptglab.com](mailto:proteintech@ptglab.com)  
W: [ptglab.com](http://ptglab.com)

This product is exclusively available under Proteintech Group brand and is not available to purchase from any other manufacturer.

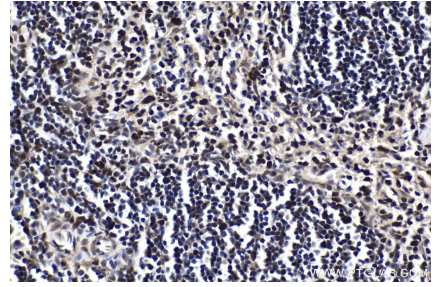
## Selected Validation Data



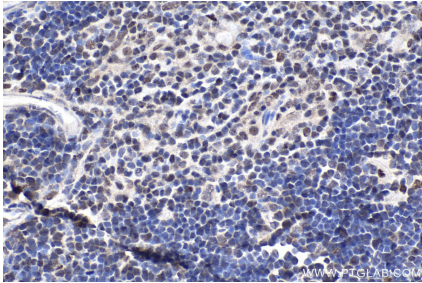
Immunohistochemical analysis of paraffin-embedded human ovary tumor tissue slide using KHC1923 (BCL11A IHC Kit).



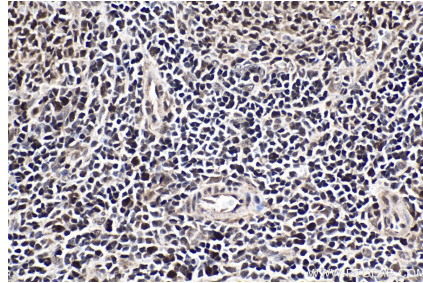
Immunohistochemical analysis of paraffin-embedded human pancreas cancer tissue slide using KHC1923 (BCL11A IHC Kit).



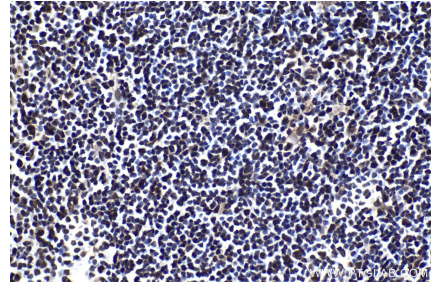
Immunohistochemical analysis of paraffin-embedded mouse spleen tissue slide using KHC1923 (BCL11A IHC Kit).



Immunohistochemical analysis of paraffin-embedded mouse thymus tissue slide using KHC1923 (BCL11A IHC Kit).



Immunohistochemical analysis of paraffin-embedded rat spleen tissue slide using KHC1923 (BCL11A IHC Kit).



Immunohistochemical analysis of paraffin-embedded rat thymus tissue slide using KHC1923 (BCL11A IHC Kit).