

For Research Use Only

Human CD3 Magnetic Beads Kit

Catalog Number: KMS001



www.ptglab.com

Description

CD3 is a multimeric protein associated with T cell receptor (TCR) to form a complex involved in antigen recognition and signal transduction. 45%-70% human peripheral blood mononuclear cells (PBMC) express CD3. Human CD3 Magnetic Beads Kit is used for isolation or depletion of human CD3 T lymphocytes from PBMC, whole blood, or other sample types. Following incubation with biotinylated human CD3 antibody and Streptavidin magnetic beads, the cell sample is placed on a magnet. CD3+ cells remain attached to magnetic beads after separation and can be used for downstream applications, such as in cell expansion. CD3- cells remain in supernatant and can also be used for further applications.

Components

KMS001-10:
· MS001-10: 100µL 10mg/mL streptavidin magnetic beads
· MS65133-10: 100µL 0.1mg/mL Biotin-CD3 (clone: OKT3)
KMS001-100:
· MS001-100: 1mL 10mg/mL streptavidin magnetic beads
· MS65133-100: 1mL 0.1mg/mL Biotin-CD3 (clone: OKT3)

Package

10test/100test

Storage

2-8°C

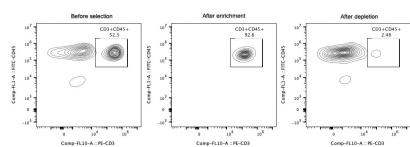
Reactivity

Human

Recommend usage

10µL Biotin-CD3 antibody and 10µL streptavidin beads for 1×10^7 cells

Validation Data



Representative example of enrichment and depletion: Following cell separation, cell suspension was stained with FITC-CD45(F10-89-4) and PE-CD3(UCHT1) antibodies. All viable cells are gated in the analysis. Left panel: CD3+CD45+ cells before selection. Middle panel: CD3+CD45+ cells after enrichment. Right panel: CD3+CD45+ cells... after depletion. Human CD3 magnetic beads kit is tested using PBMC from three donors.

For technical support and original validation data for this product please contact

T: 1 (888) 4PTGLAB(1-888-478-4522)(toll free in USA), or
1(312) 455-8498(outside USA)

E: proteintech@ptglab.com
W: ptglab.com

This product is exclusively available under
Proteintech Group brand and is not available
to purchase from any other manufacturer.