

For Research Use Only

Human CD4 Magnetic Beads Kit

Catalog Number: KMS002



www.ptglab.com

Description

CD4 is a coreceptor of T cell receptor in T lymphocytes to recognize antigens displayed by an antigen presenting cell in the context of class II MHC molecules. It is observed that 25%-65% human lymphocytes are CD4 positive. Human CD4 Magnetic Beads Kit is used for isolation or depletion of human CD4 T lymphocytes from PBMC, whole blood, or other sample types. Following incubation with biotinylated human CD4 antibody and Streptavidin magnetic beads, the cell sample is placed on a magnet. CD4+ cells remain attached to magnetic beads after separation and can be used for downstream applications, such as cell expansion, but not suitable for flow cytometry. CD4- cells remain in supernatant and can also be used for further application.

Components

KMS002-10:
· MS001-10: 100µL 10mg/mL streptavidin magnetic beads
· MS65143-10: 100µL 0.1mg/mL Biotin-CD4 (clone: RPA-T4)
KMS002-100:
· MS001-100: 1mL 10mg/mL streptavidin magnetic beads
· MS65143-100: 1mL 0.1mg/mL Biotin-CD4 (clone: RPA-T4)

Package

10test/100test

Storage

2-8°C

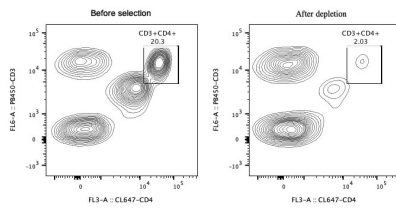
Reactivity

Human

Recommend usage

10mL Biotin-CD4 antibody and 10mL streptavidin beads for 1×10^7 cells

Validation Data



Representative example of enrichment and depletion: Following depletion of CD4⁺ cells, supernatant cell suspension was stained with PB450-CD3(clone: HIT3a) and CL647-CD4(clone: OKT4). CD45⁺ cells are gated in the analysis. Left panel: CD3⁺CD4⁺ cells before selection. Right panel: CD3⁺CD4⁺ cells after depletion. Human CD... magnetic beads kit is tested using PBMC from three donors.

For technical support and original validation data for this product please contact

T: 1 (888) 4PTGLAB(1-888-478-4522)(toll free in USA), or
1(312) 455-8498(outside USA)

E: proteintech@ptglab.com
W: ptglab.com

This product is exclusively available under
Proteintech Group brand and is not available
to purchase from any other manufacturer.