

For Research Use Only

# Human CD4 Memory T Cell Isolation Kit

Catalog Number: KMS305



## Description

Memory T cells are antigen-exposed T lymphocytes which would mediate fast and robust response upon repeat encounter with antigen. Human CD4 Memory T Cell Isolation kit is designed to isolate untouched CD4+ memory T lymphocytes which contains a biotin labeled antibody cocktail and streptavidin conjugated magnetic beads. Through incubation of samples with biotin antibody cocktail followed by incubation of streptavidin beads, the magnetically labeled non CD4+ memory cells will be retained in the tube by magnetic separator. The untouched CD4+ T memory cells are collected in supernatant. Any downstream application can be performed on CD4+ memory cells after separation, such as Flow Cytometry and in vitro culture.

## Components

KMS305-10:

·MS305A-10: 300  $\mu$ L Human CD4 Isolation Biotin Antibody Cocktail (CD8, CD19, CD14, CD56, CD45RA, CD20, CD11b, CD16, CD36, CD235a, CD123, TCR )

·MS305B-10: 300 $\mu$ L streptavidin magnetic beads

KMS305-100:

·MS305A-100: 3mL Human CD4 Isolation Biotin Antibody Cocktail (CD8, CD19, CD14, CD56, CD45RA, CD20, 11b, CD16, CD36, CD235a, CD123, TCR )

·MS305B-100: 3mL streptavidin magnetic beads

## Package

10test/100test

## Storage

2-8°C

## Reactivity

Human

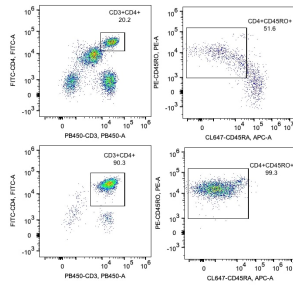
## Beads diameter

2.7  $\mu$ m

## Recommend usage

30 $\mu$ L biotin labeled antibody cocktail and 30 $\mu$ L streptavidin beads for  $1 \times 10^7$  cells

## Validation Data



**Representative example of enrichment:** Following cell separation, cell suspension was stained with PB450-CD3 (UCHT1), FITC-CD4 (OKT4), PE-CD45RO (UCHL1) and CL647-CD45RA (HI100) antibodies. All viable cells are gated in the analysis. Left upper panel: CD3+CD4+ cells before selection; right upper panel: CD45RO+ cells within CD4+ cells. Left lower panel: CD3+CD4+ cells after selection; right lower panel: CD45RO+ cells within CD4+ cells. Human CD4 memory T cell isolation kit is tested using PBMC from three donors.

For technical support and original validation data for this product please contact

T: 1 (888) 4PTGLAB(1-888-478-4522)(toll free in USA), or  
1(312) 455-8498(outside USA)

E: [proteintech@ptglab.com](mailto:proteintech@ptglab.com)  
W: [ptglab.com](http://ptglab.com)

This product is exclusively available under  
Proteintech Group brand and is not available  
to purchase from any other manufacturer.