

For Research Use Only

# Human CD14 Magnetic Beads

Catalog Number: MS006



## Description

CD14 is a surface antigen expressed on monocyte/macrophage. It cooperates with other proteins to mediate innate immune response to bacterial LPS. 5%-10% human peripheral blood mononuclear cells (PBMC) express CD14. Human CD14 Magnetic Beads Kit is used for isolation or depletion of human CD14 monocytes/macrophages from PBMC, whole blood, or other sample types. CD14 positive cells and negative cells could be separated after short incubation with Human CD14 Magnetic Beads on a magnet. CD14 positive cells remain attached to magnetic beads after separation and can be used for further molecular analysis or in vitro culture, but not suitable for flow cytometry analysis. CD14 negative cells remain in the supernatant and can be used also.

## Components

MS006-10: 100  $\mu$ L 10 mg/mL human CD14 magnetic beads

MS006-100: 1 mL 10 mg/mL human CD14 magnetic beads

## Package

10 test/100 test

## Storage

2-8°C

## Reactivity

Human

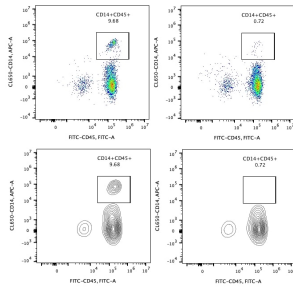
## Recommend usage

10  $\mu$ L Human CD14 Magnetic Beads for  $1 \times 10^7$  cells

## Beads Diameter

2.7  $\mu$ m

## Validation Data



**Representative example of depletion:** Following cell separation, cell suspension was stained with FITC-CD45(F10-89-4) and CL650-CD14(UCHM1) antibodies. All viable cells are gated in the analysis. Left panel: CD14+CD45+ cells before selection. Right panel: CD14+CD45+ cells after depletion. Human CD14 magnetic beads are tested.. using PBMC from three donors.

For technical support and original validation data for this product please contact

T: 1 (888) 4PTGLAB(1-888-478-4522)(toll free in USA), or  
1(312) 455-8498(outside USA)

E: [proteintech@ptglab.com](mailto:proteintech@ptglab.com)  
W: [ptglab.com](http://ptglab.com)

This product is exclusively available under  
Proteintech Group brand and is not available  
to purchase from any other manufacturer.