

For Research Use Only

# CoraLite®594-Phalloidin (red)

Catalog Number: PF00003

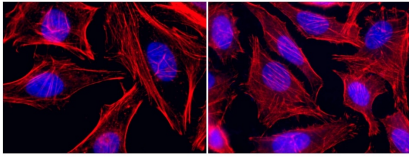


[www.ptglab.com](http://www.ptglab.com)

---

<b>Description</b>	Phalloidin is a toxin isolated from mushrooms that binds F-Actin in the cytoskeleton. This product is conjugated to our fluorescent CoraLite(R) dye to stain F-actin for labeling, identifying and quantifying actin filaments in immunostaining studies. Compared to many fluorescent dyes, CoraLite(R) dyes have advantages in brightness, light stability and water solubility. Excitation/Emission maxima wavelengths are 593 nm/614 nm
<b>Conjugated</b>	CoraLite®594-Phalloidin(red). Ex/Em: 593/614 nm
<b>Package</b>	300T
<b>Storage</b>	Store at -20°C. Avoid exposure to light. Stable for 2 years after shipment.
<b>Stock preparation</b>	Prepare a 200T/mL stock solution by dissolving lyophilized phalloidin (300T) in 1.5 mL sterile water and protect solution from light.
<b>Cautions</b>	This product is in the form of freeze-dried powder. Please centrifuge it immediately before use and dissolve it in a suitable solvent before use. Phalloidin is highly toxic, please take protective measures .

## Validation Data



Cell: HeLa Red: CL594-Phalloidin Blue: DAPI

Immunofluorescent analysis of (4% PFA) fixed HeLa cells using the CoraLite®594-conjugated Phalloidin antibody, CL594-Phalloidin, at dilution of 1:400. The nuclei were counterstained with DAPI.

---

**For technical support and original validation data for this product please contact**

T: 1 (888) 4PTGLAB(1-888-478-4522)(toll free in USA), or  
1(312) 455-8498(outside USA)

E: [proteintech@ptglab.com](mailto:proteintech@ptglab.com)  
W: [ptglab.com](http://ptglab.com)

---

**This product is exclusively available under Proteintech Group brand and is not available to purchase from any other manufacturer.**