

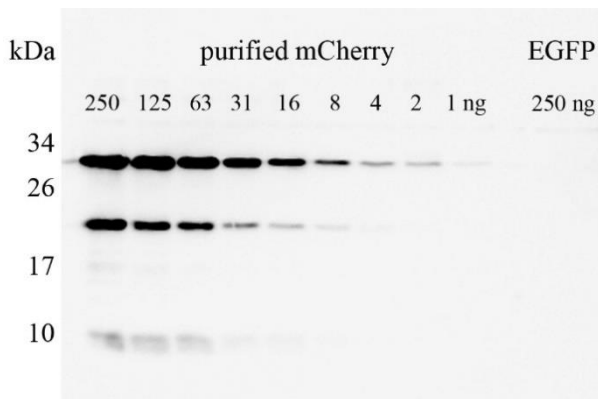
pan-RFP Polyclonal Antibody

Product code: pabr1

Description	Rabbit polyclonal antibody [pabr1] to a broad range of Red Fluorescent Proteins from Discosoma and Entacmaea species
Product type	Primary antibody
Host	Rabbit
Isotype	IgG
Target/ Specificity	Recombinant proteins, stably and transiently transfected cell lines; red fluorescent proteins from Discosoma (dsRed, mCherry, tdTomato, mPlum); fluorescent proteins from Entacmaea lineage (TagRFP, TagBFP, mKate2, mRuby2), synthetic red fluorescent protein mScarlet
Immunogen	Red Fluorescent Proteins (RFPs), a mixture of several representatives from different lineages
Clonality	Polyclonal
Concentration	0.5 mg/mL
Purity	Antigen affinity purification
Form	Liquid
Storage buffer	PBS, 50% glycerol, 0.05% NaN ₃
Size	20 µL; 150 µL
Storage instructions	Shipped on ice. Store at -20°C. Stable for 1 year after shipment.
Applications	Western blot: recommended starting dilution 1:1,000 Immunofluorescence: recommended starting dilution 1:400-1:800 ELISA tested: recommended dilution N/A The concentration of the antibody can vary. The optimal dilution should be determined by the user.

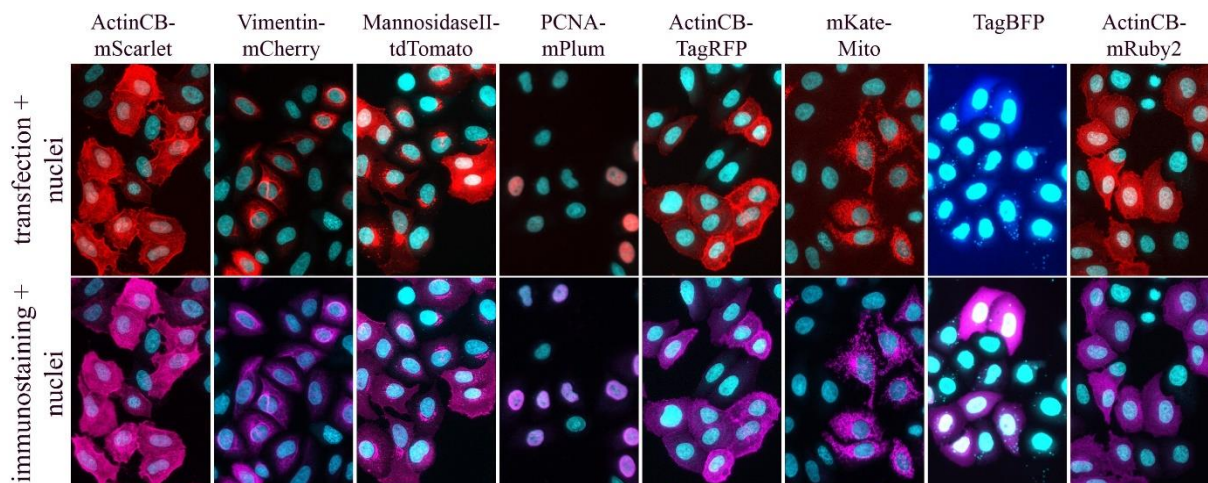
Tested applications

Western blotting



Western blot detection of purified mCherry red fluorescent protein down to 1-2 ng. A serial dilution of purified recombinant mCherry protein (250 ng - 1 ng) was subjected to SDS-PAGE. Purified recombinant EGFP (250 ng) was used as negative control (last lane). Pan-RFP (*pabr1*) antibody was applied at 1:1000 dilution o/n at +4°C. Secondary antibody: goat anti-rabbit HRP.

Immunofluorescence



Immunostaining of HeLa cells, transiently transfected with different fluorescent proteins. Primary antibody: pan-RFP (*pabr1*) 1:800 for 1 h RT. Secondary: goat anti-rabbit. Upper row shows the innate signals from transfected fluorescent proteins, nuclei are in cyan. Lower row shows the signals from immunostainings with pan-RFP (*pabr1*) antibody, nuclei are in cyan. Pan-RFP (*pabr1*) can be used for IF detection of mScarlet, mCherry, tdTomato, mPlum, TagRFP, mKate TagBFP, mRuby2.

Only for research applications, not for diagnostic or therapeutic use.

ChromoTek is a registered trademark of ChromoTek GmbH, part of Proteintech Group. Nanobody is a registered trademark of Ablynx, a Sanofi company. Alexa Fluor is a registered trademark of Life Technologies Corporation, a part of Thermo Fisher Scientific Inc. Other suppliers' products may be trademarks or registered trademarks of the corresponding supplier each. Statements on other suppliers' products are given according to our best knowledge.